

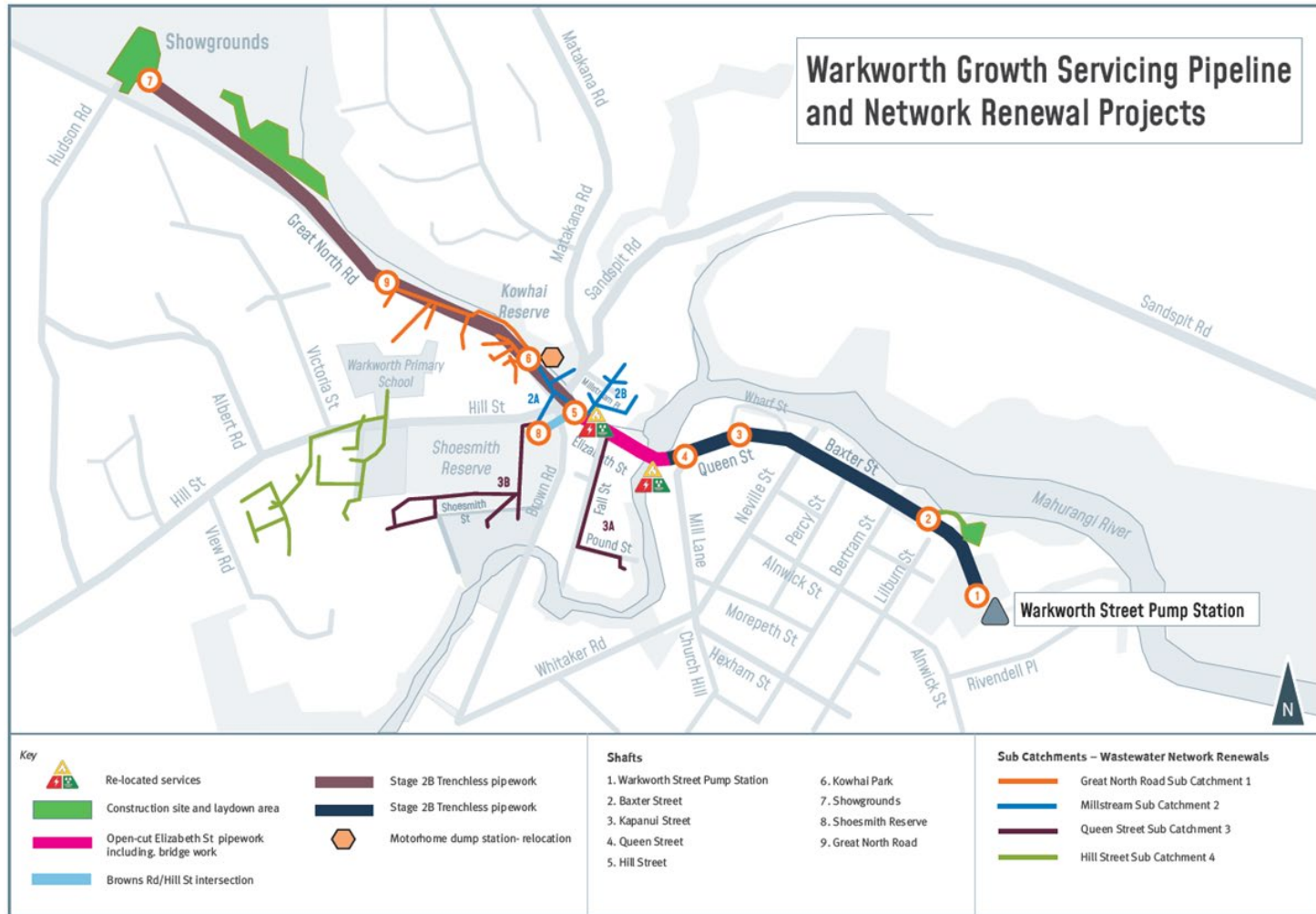
# Warkworth Township Businesses Hui

Warkworth Growth Servicing Pipeline and Network Renewals Projects.



29 April 2026

# Presentation Content



1. Current Status – Wastewater Network Renewals project
2. Current Status- Warkworth Growth Servicing project
3. Questions

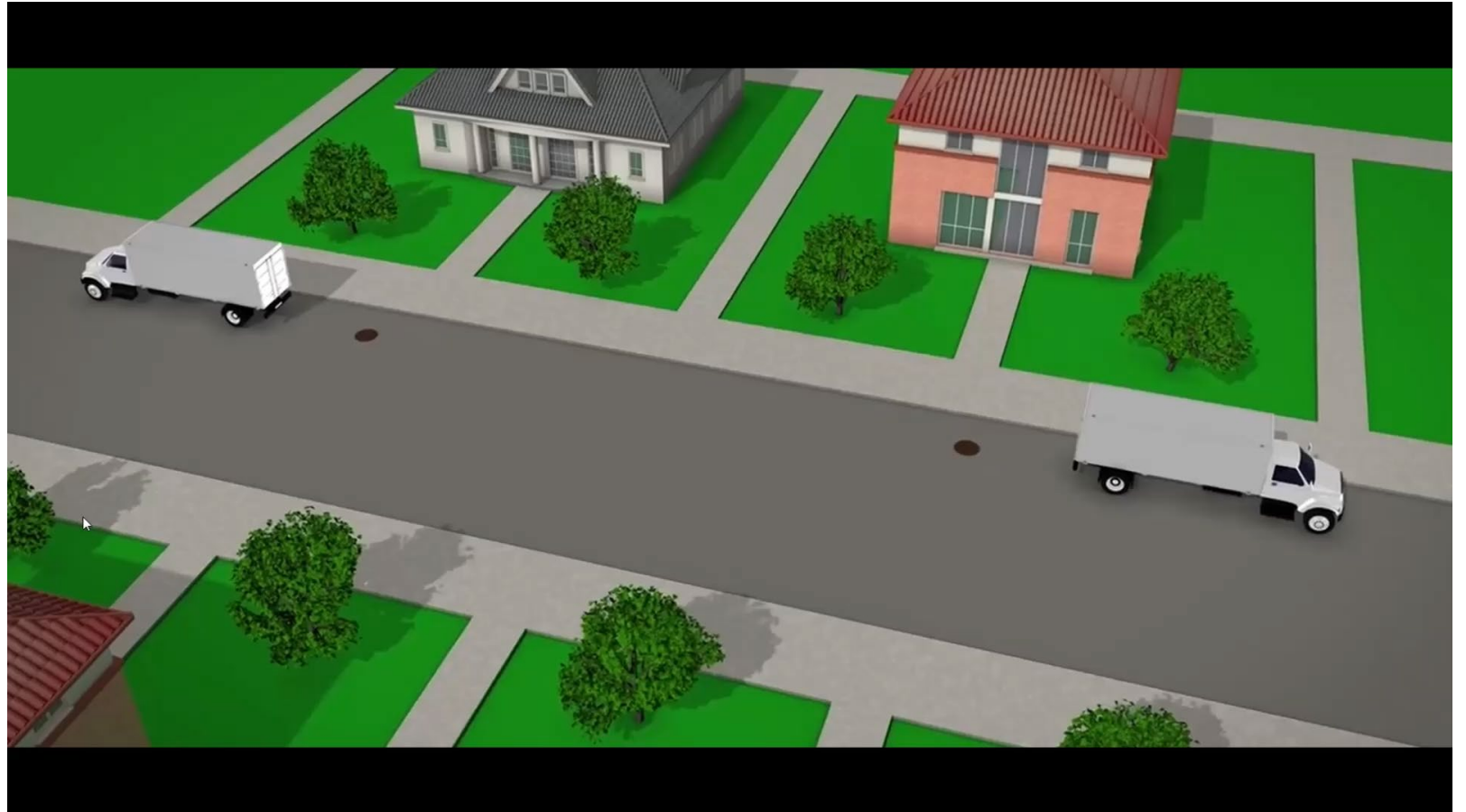
# Local Network Wastewater Renewals



## What is trenchless rehabilitation?

### What are we doing?

- CCTV Investigations
- Localised civil repairs
- Trenchless rehabilitation
- Rehabilitation of manholes





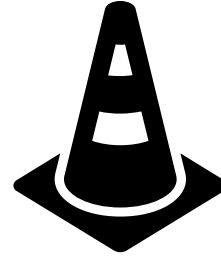
## Where are we up to?

- All CCTV investigations have been completed (3.5km of CCTV collected of the public network)
- Civil repairs commenced in March to enable trenchless rehabilitation. Manhole rehabilitation will also be completed concurrent with relining
- Trenchless rehabilitation commencing this week, starting along Hill Street and Kasper Street. Plan to trenchless reline 3.3km of wastewater pipeline.
- All renewals scope completed by end of June 2026

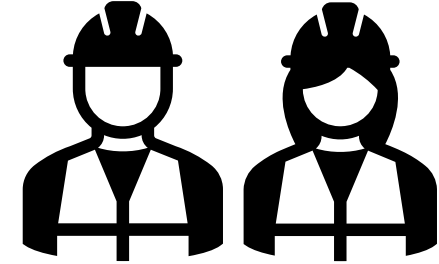
# What can you expect?



Private Property Access



Traffic Disruptions



Physical Presence

Establishment

February 2026

Civil Works

Late - March 2026

Completion

June 2026



Investigations

Late February 2026

Trenchless  
Relining

May 2026

Timeline



network  
water  
Watercare 

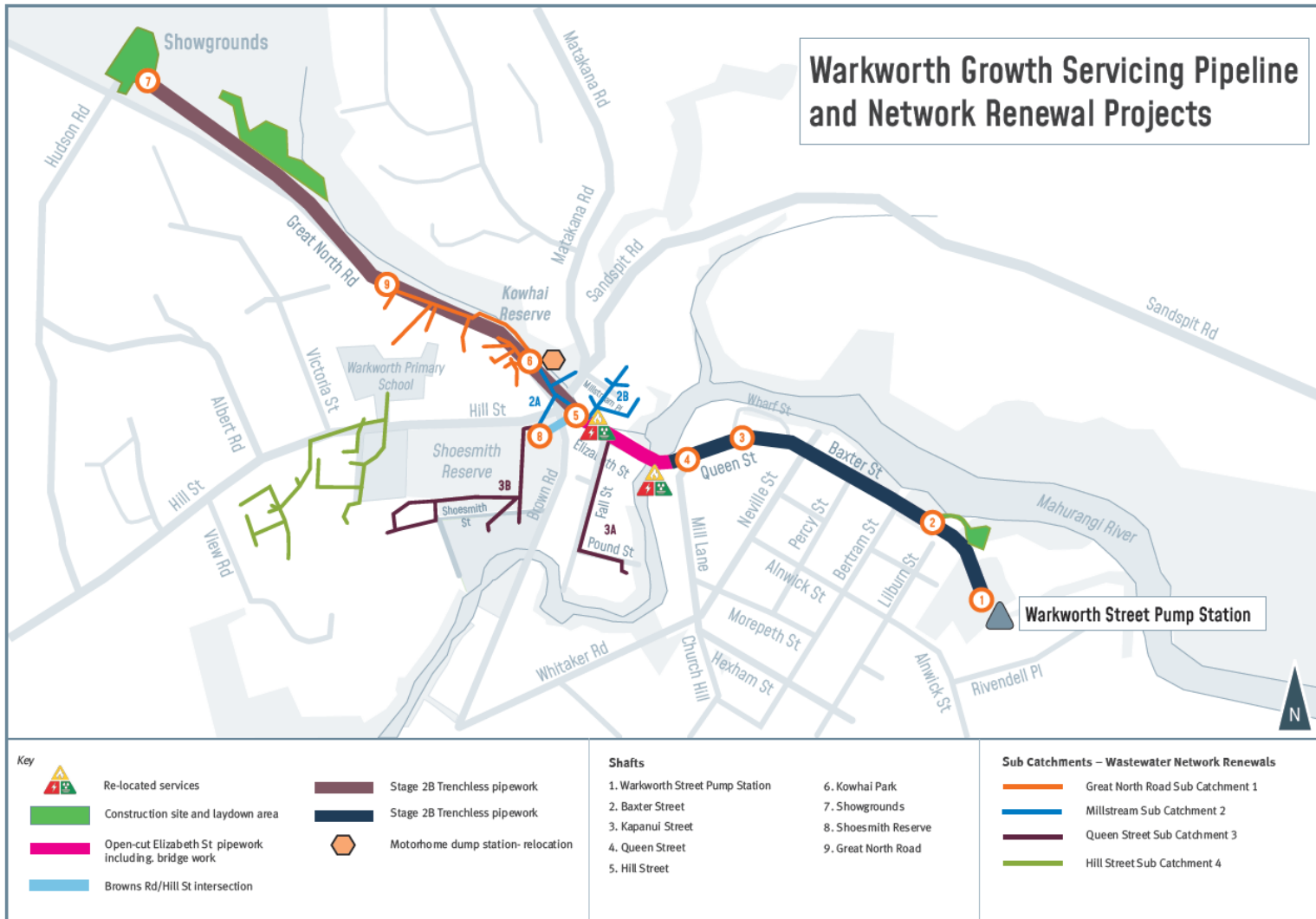
Improving your wastewater network  
February 2026 to June 2026  
**Warkworth Wastewater Renewals**  
Thank you for your patience during these important infrastructure works  
For further information please contact:  
Jackson Potauaine on 021 220 4343  
OR  
Email: [wwrenewals@water.co.nz](mailto:wwrenewals@water.co.nz)  
Watercare 

Thank  
you for  
your  
patience!

# Warkworth Growth Servicing Pipeline

29 April 2026

# General Sequencing and Timing



Description	Timing
Tunnelling Works (incl shafts) from Hill St to Showgrounds	August 2026 - May 2027.
Elizabeth Street (shopfronts) open cut and bridge crossing	June 2026 - October 2026.
Hill Street Intersection	July 2026 – December 2026
Tunnelling Works (incl shafts) from Warkworth Street PS to Queen Street	April 2026 – February 2027

# Traffic Impacts

## Queen Street



- We are starting here to **minimize impacts** to the community
- The finalized design has manholes at **twice the original depth** and additional **existing services**
- We have coordinated works to **minimize** the amount of time there are **open excavations**
- Queen St shaft will be at the **same time** as the Elizabeth St bridge works
- **One way** detour
- Loss of **two carparks** on each side of road
- **June to September 26**

# Traffic Impacts



# Traffic Impacts

## Elizabeth Street

- Open trench work to shop fronts to be completed within **1.5 months. Extended working hours 7am to 7pm. Mid August to Early October**
- Two-lane traffic maintained on Elizabeth St during open cut works, with the loss of on-street parking in some areas.
- **One-lane closure** required for **pipe bridge** construction (5–6 weeks) **Late June to Mid August 2026**
- **Access** for customers and delivery vehicles will be maintained
- **Parking for customers** (no on-street parking to be used by Contractor or WSL)
- **Dirt and dust** on paths and storefronts (BAU, consent condition)
- **Signage** to let customers know stores are still open (BAU)
- Open Trench works to shop fronts and bridge crossing to be completed between **end of June to October 2026**.



## **Dedicated Communications and Stakeholder Team**

- Wilbur Jeftha (Watercare)
- Celeste Rauner (McConnell Dowell)

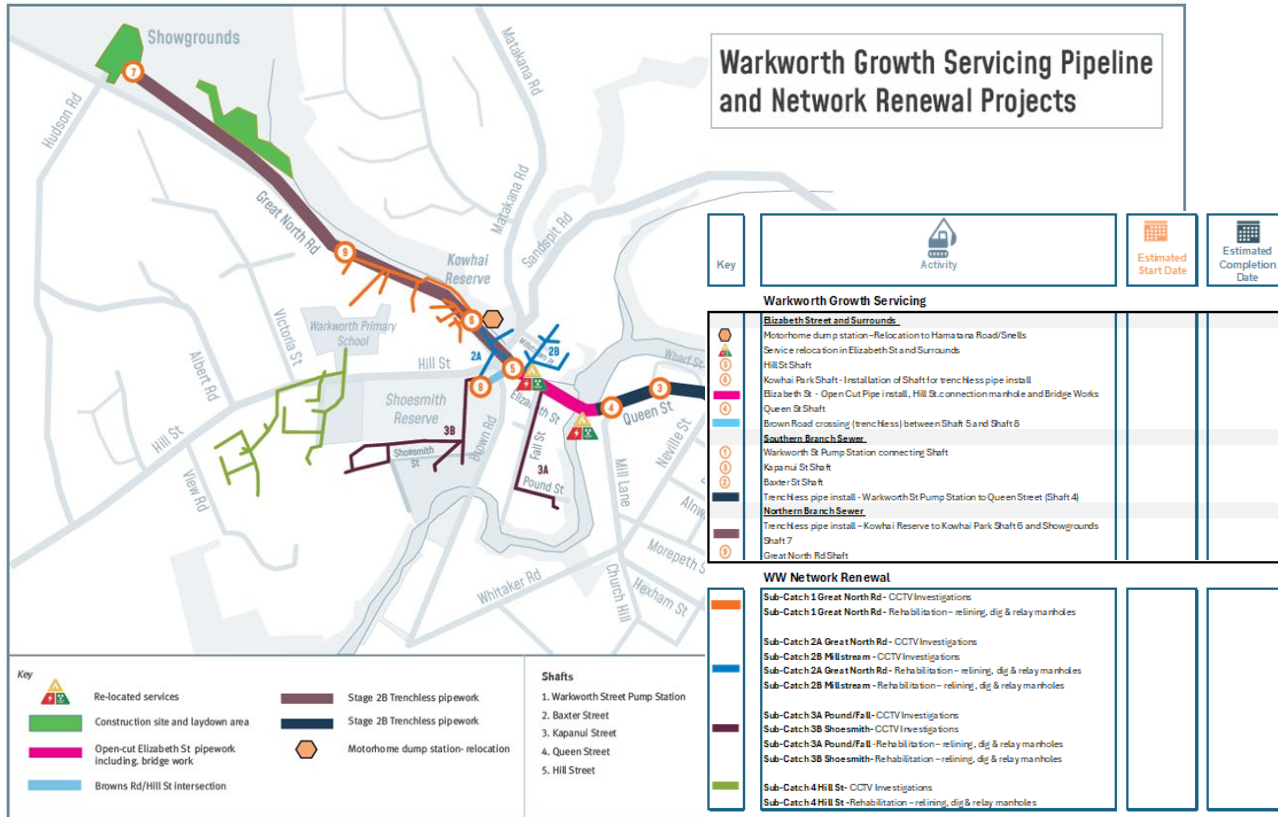
# Traffic Impacts

## Kapanui Street

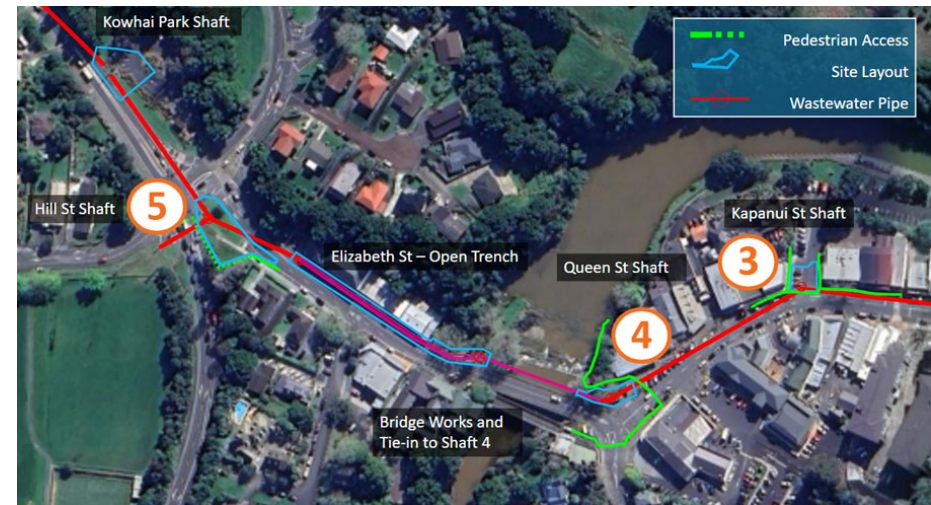


- **Road closure**
- **Loss of parking at road entrance only**
- **Pedestrian and shop access maintained**
- **September 26 to March 27**

# Future Updates



- Regular updates through WSL Stakeholder team with estimated dates of key activities
- Continued engagement with affected Business owners on dates changes and impacts



**Thank you**

Pātai / Questions?